

# ALFA

NETWORK





To Infinity,

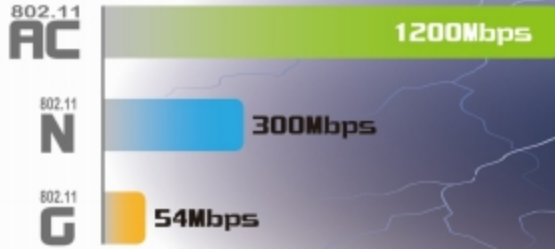


and Beyond...

**ALFA**  
NETWORK

# Long Range Wireless USB

Wi-Fi Data Rate



## AWUS036AC

- Ultra-fast AC1200 wireless
- High-sensitivity external antenna
- 2.4G/5GHz dual-band radio
- Lag-free HD video streaming, online gaming



## AWUS036EAC

- Ultra-fast AC1200 wireless
- USB 3.0 connectivity
- Ideal for HD video
- 2.4G/5GHz dual-band radio



## AWUS036HAC

- Ultra-fast AC1200 wireless
- USB 3.0 connectivity
- Built-in signal amplifier for longer range, better signal penetration
- 2.4G/5GHz dual-band radio
- Ideal for HD video, online gaming



## AWUS036NHC

- CD-free driver self-installation on Win/Mac platform
- Built-in signal amplifier for longer range, better signal penetration
- 802.11n 150M wireless
- Ideal for HD video daily network access



## AWUS036NHV

- 802.11n 150M wireless
- Specially tuned HW/SW for longer range, excellent signal reception
- Field-proven wireless coverage and signal stability
- Fully compliant with Windows, and Mac OS



## AWUS052NH

- 2.4G/5GHz dual-band radio
- Cross-platform Windows & Mac support
- Built-in signal amplifier for longer range, better signal penetration
- Field-proven wireless coverage and signal stability
- Ideal for HD video online gaming





### AWUS036NH

- Long range 802.11n 150Mbps wireless
- Field-proven wireless coverage and signal penetration
- High sensitivity 5dbi antenna
- Fully compliant with Windows, and Mac OS
- Ideal for HD video, online gaming



### AWUS036NHA

- Long range 802.11n 150Mbps wireless
- Field-proven wireless coverage and signal penetration
- High sensitivity 5dbi antenna
- Fully compliant with Windows, and Mac OS
- Ideal for HD video, online gaming



### AWUS036NHR

- Long range 802.11n 150Mbps wireless
- Field-proven wireless coverage and signal penetration
- High sensitivity 5dbi antenna
- Fully compliant with Windows, and Mac OS
- Ideal for HD video, online gaming



### AWUS036H

- Long range 802.11g wireless
- Field-proven wireless coverage and signal penetration
- High sensitivity 5dbi antenna
- Fully compliant with Windows, and Mac OS
- Ideal for HD video, online gaming



### AWUS036NEH

- Long range 802.11n 150Mbps wireless
- Field-proven wireless coverage and signal penetration
- High sensitivity 5dbi antenna
- Fully compliant with Windows, and Mac OS
- Ideal for HD video, online gaming



### AWUS036EW

- Long range 802.11g wireless
- Field-proven wireless coverage and signal penetration
- High sensitivity 5dbi antenna
- Fully compliant with Windows, and Mac OS
- Ideal for HD video, online gaming





# Smart Wireless Indoor AP / CPE

## AIP-W525HAC



- Ultra-fast AC1600 wireless
- High-sensitivity external antenna
- Built-in signal amplifier for longer range, better signal penetration
- Simultaneous 2.4G/5GHz dual-band radio
- Lag-free HD video streaming, online gaming

AC1600  
Wireless



## E36AC



- Ultra-fast AC750 wireless
- Extend wireless signal coverage
- Compact size, wall-mount design
- Compliant with 802.11ac, 802.11b/g/n
- Simultaneous 2.4G/5GHz dual-band radio

AC 750  
Wireless



## AC1200R



- Ultra-fast AC1200 wireless
- Simultaneous 2.4G/5GHz dual-band radio
- Built-in USB host for 3G/4G modem,
- Firewall protection, access control, DoS attack prevention
- Lag-free HD video streaming, online

AC1200  
Wireless



## AP120C



- Built-in signal amplifier for longer range, better signal penetration
- Simultaneous 2.4G/5GHz dual-band radio
- 802.11a/b/g/n 600M wireless
- Ideal for office network, public Internet access

N600  
Wireless



## AIP-W525H



- 802.11n 300M wireless
- Specially tuned HW/SW for longer range, excellent signal reception
- Field-proven wireless coverage and signal stability
- All-in-One device: Router/access point/WISP router/repeater/WDS service

N300  
Wireless



## AIP-W525HU



- 802.11n 300M wireless
- Specially tuned HW/SW for longer range, excellent signal reception
- USB host for ALFA wireless adapter to extend your wireless access
- All-in-One device: Router/access point/WISP router/repeater/WDS service



## AIP-W515H



- Long range 802.11n 150Mbps wireless
- Field-proven wireless coverage and signal penetration
- High sensitivity 5dbi antenna
- All-in-One device: Router/access point/WISP router/repeater/WDS service
- Ideal for home/SOHO networking application

N150  
Wireless



## E36H



- 802.11n 150Mbps wireless
- Eliminate signal dead zone in your network
- Compact size, wall-mount design
- Signal boost for existing home wireless network
- Comprehensive web browser setup, no CD required

N150  
Wireless



### AIP-W522



- 802.11n 300Mbps wireless
- Field-proven wireless coverage and signal penetration
- High sensitivity 5dbi antenna
- Comprehensive smart setup, no CD required
- Ideal for home/SOHO networking



### E36



- 802.11n 300Mbps wireless
- Eliminate signal dead zone in your network
- Compact size, wall-mount design
- Signal boost for existing home wireless network



### AIP-W511



- Portable 802.11n 150Mbps wireless
- AP / router / repeater / wireless client / USB LAN Adapter 5 operation modes for various scenarios
- Powered via USB interface
- Self-install adapter driver fully compliant with Windows, and Mac OS



### AIP-W512



- Portable 802.11n 150Mbps wireless
- AP / router / repeater / wireless client / USB LAN Adapter 5 operation modes for various scenarios
- Powered via micro-USB
- Ideal for mobile Internet applications



### AIP-W502



- Long range 802.11n 150Mbps wireless
- Field-proven wireless coverage and signal penetration
- High sensitivity 5dbi antenna
- Fully compliant with Windows, and Mac OS
- Ideal for HD video, online gaming



### AP121U AP121



- Long range 802.11n 150Mbps wireless
- Field-proven wireless coverage and signal penetration
- High sensitivity 5dbi antenna
- Fully compliant with Windows, and Mac OS
- Router/access point/repeater/client bridge operation modes



### R36



- Long range 802.11n 150Mbps wireless
- USB host for ALFA wireless adapter & USB modem to extend your network access
- High sensitivity 5dbi antenna
- Fully compliant with Windows, and Mac OS
- Ideal for HD video, online gaming





## To Infinity and Beyond



### N2AC



- Ultra-fast AC1200 wireless
- IEEE802.11ac 2.4G radio
- High gain, high sensitivity external antenna
- Weather-resistant design
- Built-in signal amplifier for longer range, better signal penetration
- Ideal for wireless backbone, signal bridge, access point scenarios



### N5AC



- Ultra-fast AC1200 wireless
- IEEE802.11ac 5G radio
- High gain, high sensitivity external antenna
- Weather-resistant design
- Built-in signal amplifier for longer range, better signal penetration



### N52AC



- Ultra-fast AC1200 wireless
- Simultaneous 2.4G/5GHz dual-band radio
- High gain, high sensitivity external antenna
- Weather-resistant design
- Built-in signal amplifier for longer range, better signal penetration
- Ideal for wireless backbone, signal bridge, access point scenarios



### AP120D



- Built-in signal amplifier for longer range, better signal penetration
- Simultaneous 2.4G/5GHz dual-band radio
- 802.11a/b/g/n 600M wireless
- Weather-resistant design
- Ideal for wireless backbone, outdoor public Internet access



### Outdoor LTE Station



- 802.11n 150M wireless
- Built-in 4G LTE for wireless Internet access
- Specially tuned HW/SW for longer range, excellent signal reception
- High gain, high sensitivity external antennas for LTE, and wireless access
- Weather-resistant design
- Ideal for LTE signal bridge, wireless internet access scenarios



### N5



LED Indicator

- 802.11n 5GHz 300M wireless
- Built-in high-sensitivity antenna
- Built-in signal amplifier for longer range, better signal penetration
- Field-proven wireless coverage and signal stability
- Weather-resistant design
- Ideal for wireless signal bridge, wireless Internet access scenarios







### N2

- 802.11n 2.4GHz 300M wireless
- Built-in high-sensitivity antenna
- Built-in signal amplifier for longer range, better signal penetration
- Field-proven wireless coverage and signal stability
- Weather-resistant design
- Ideal for wireless signal bridge, wireless Internet access scenarios



### N5C

- 802.11n 5GHz 300M wireless
- External high-sensitivity antenna
- Built-in signal amplifier for longer range, better signal penetration
- Field-proven wireless coverage and signal stability
- Weather-resistant design
- Ideal for wireless signal bridge, wireless Internet access scenarios



### N2C

- 802.11n 2.4GHz 300M wireless
- External high-sensitivity antenna
- Built-in signal amplifier for longer range, better signal penetration
- Field-proven wireless coverage and signal stability
- Weather-resistant design
- Ideal for wireless signal bridge, wireless Internet access scenarios



### Tube 2H

- 802.11n 2.4GHz 150M wireless
- External high-sensitivity antenna
- Built-in signal amplifier for longer range, better signal penetration
- Field-proven wireless coverage and signal stability
- Weather-resistant design
- Ideal for wireless Internet access scenarios



### G2N G2NC

- Long range 802.11n 150Mbps wireless
- Field-proven wireless coverage and signal penetration
- Built-in signal amplifier for longer range, better signal penetration
- Built-in high gain, high sensitivity antenna
- Weather-resistant design
- Ideal for wireless signal bridge, wireless Internet access scenarios



### SOLO-N

- Long range 802.11n 150Mbps wireless
- Field-proven wireless coverage and signal penetration
- Built-in high gain, high sensitivity antenna
- Weather-resistant design
- Ideal for wireless signal bridge, wireless Internet access scenarios



### Tube-U(N) Tube-U(G)

- Tube-U(N): Long range 802.11n 150Mbps wireless
- Tube-U(G): Long range 802.11g 54Mbps wireless
- Built-in high gain, high sensitivity antenna
- Built-in signal amplifier for longer range, better signal penetration
- Weather-resistant design
- Ideal for outdoor Internet access scenarios

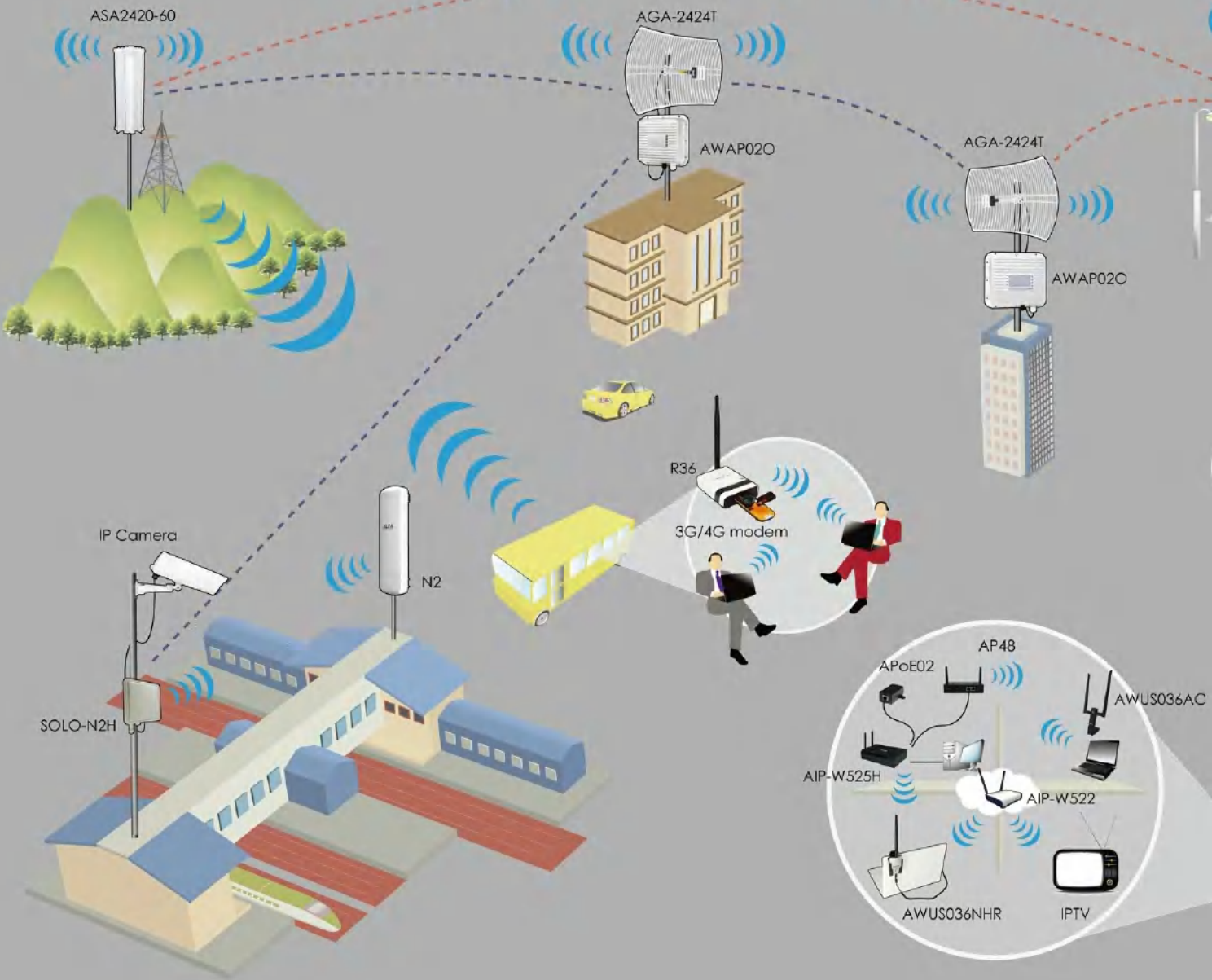


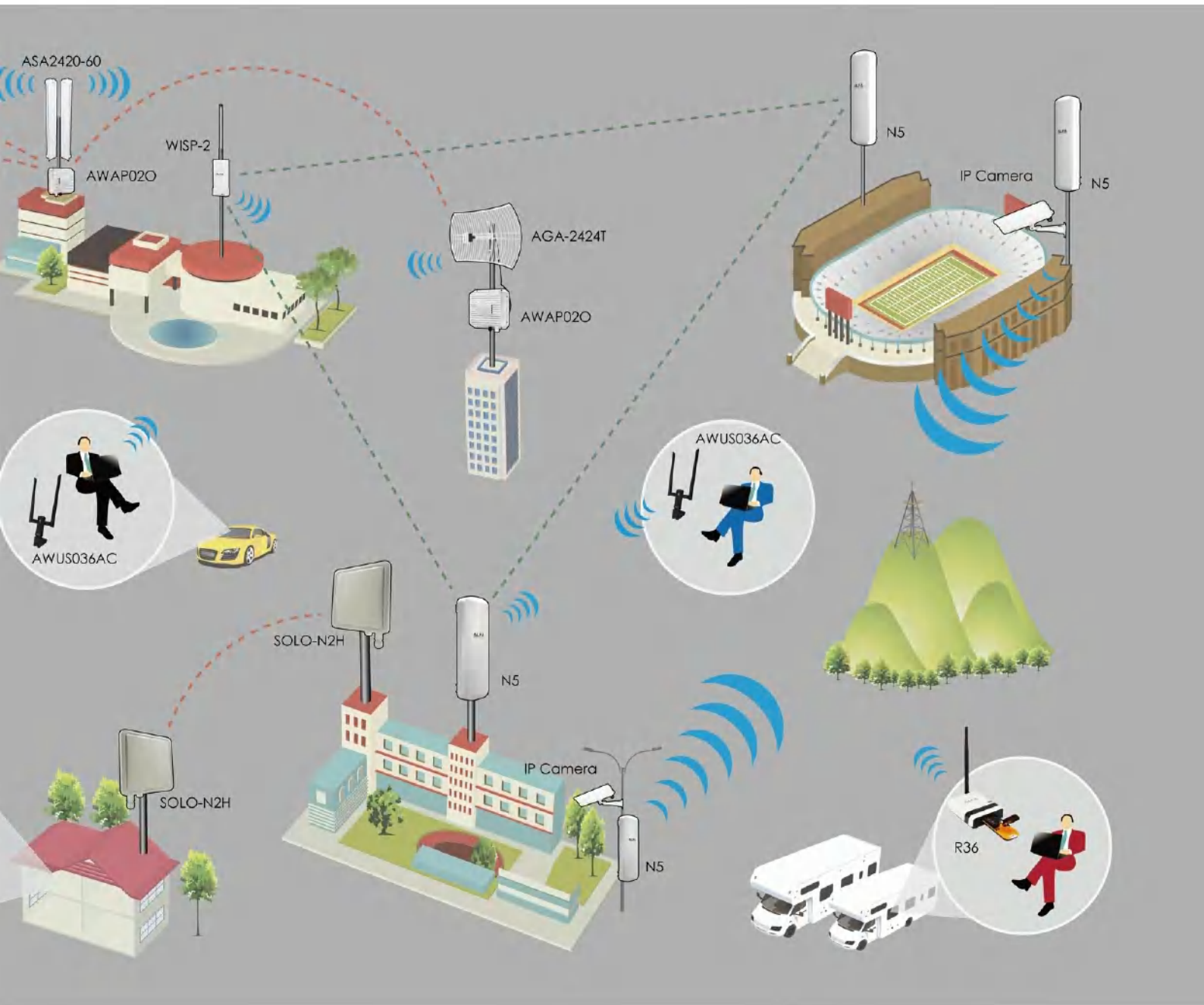
### UBDo Series

- UBDo-n: Long range 802.11n 150Mbps wireless
- UBDo-g: Long range 802.11g 54Mbps wireless
- Built-in high gain, high sensitivity antenna
- Built-in signal amplifier for longer range, better signal penetration
- Weather-resistant design
- Ideal for outdoor Internet access scenarios



# Metro Wireless Inter-Connection









## AP24GM-SFP

- 24-port 802.3at gigabit PoE, 19-inch rack mountable
- Integrated 2-Port gigabit SFP interface
- Integrated web smart SNMP, QoS, VLAN management
- PoE management: 802.3af/at selection, PoE delay, PoE schedule
- Max. 30W per port for 802.3at PD device
- Max. power budget 260W with PoE usage LED



## AP16M

- 16-port 10/100M 802.3at PoE, 19-inch rack mountable
- Integrated web smart SNMP, QoS, VLAN management
- PoE management: 802.3af/at selection, PoE delay, PoE schedule
- Link Aggregation trunking group
- Max. 30W per port for 802.3at PD device
- Max. power budget 260W with PoE usage LED



## AP08GM-SFP

- 8-port 802.3at gigabit PoE
- Integrated web management interface, 2-Port gigabit SFP interface
- Integrated web smart SNMP, QoS, VLAN management
- PoE management: 802.3af/at selection, PoE delay, PoE schedule
- 4K MAC address auto-learning and auto-aging
- Link Aggregation trunking, QOS, PVST support
- Max. 30W per port for 802.3at PD device
- Max. power budget 150W with PoE usage LED



## AP08M

- 8-port 10/100M 802.3at PoE
- Integrated web smart SNMP, QoS, VLAN management
- PoE management: 802.3af/at selection, PoE delay, PoE schedule
- IEEE 802.3x flow control & backpressure support
- Link Aggregation trunking group
- Max. 30W per port for 802.3at PD device
- Max. power budget 150W with PoE usage LED







### APS16G

- 16-port 10/100M 802.3at PoE, 19-inch rack mountable
- Max. 30W per port for 802.3at PD device
- Max. power budget 260W with PoE usage LED
- 8K MAC address auto-learning and auto-aging
- IEEE 802.3x flow control & backpressure support
- Store and forward, non-blocking wire-speed reception and transmission



### APS16

- 16-port 10/100M 802.3at PoE, 19-inch rack mountable
- Max. 30W per port for 802.3at PD device
- Max. power budget 260W with PoE usage LED
- 8K MAC address auto-learning and auto-aging
- IEEE 802.3x flow control & backpressure support



### APS084

- 8 × 10/100Mbps auto-negotiation RJ-45 ports with 4-Port 802.3af PoE
- Max. 15.4W per port for 802.3af PD device
- Max. power budget 60W with PoE usage LED
- IEEE 802.3x flow control & backpressure support
- Store and forward, non-blocking wire-speed reception and transmission



### APS08G

- 8-port 802.3at gigabit PoE
- Max. 30W per port for 802.3at PD device
- Max. power budget 150W with PoE usage LED
- IEEE 802.3x flow control & backpressure support
- IEEE802.3az energy-efficient technology reduces power consumption any time

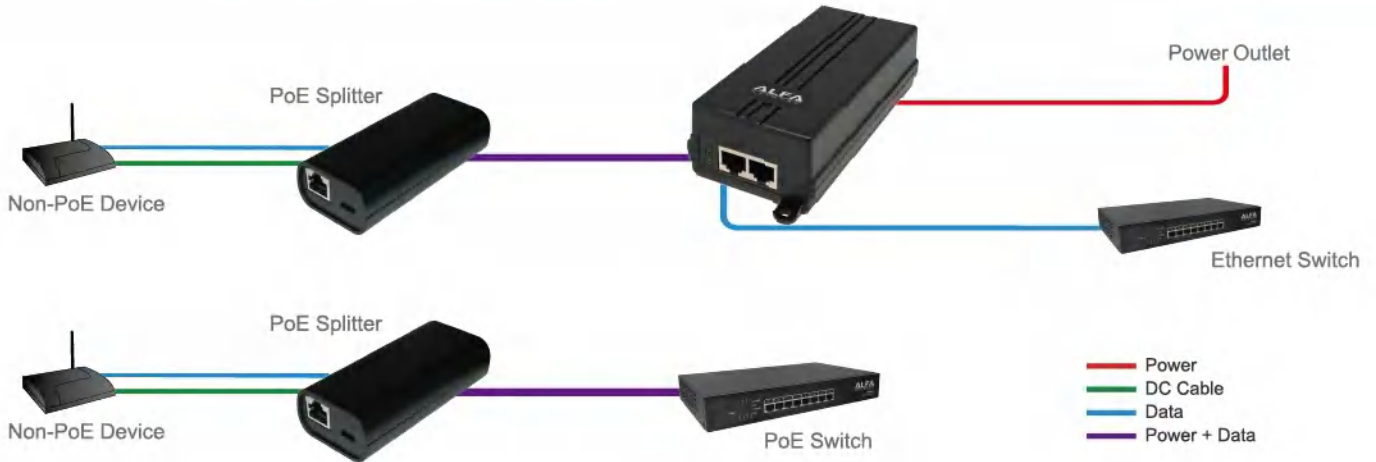


### APS08E

- 8-port 10/100M 802.3at PoE
- Max. 30W per port for 802.3at PD device
- Max. power budget 150W with PoE usage LED
- IEEE 802.3x flow control & backpressure support
- IEEE802.3az energy-efficient reduces power consumption any time



# IEEE 802.3af/at PoE Injectors



## APoE5/9/12/18V Gigabit Set

- Input: AC100V~240V
- 5V/9V/12V/18V Adjustable Output Power

## PSE-1000G

- Input: AC100V~240V



PSE-1000GU

PD-1000D

802.3at  
802.3af

30W  
PoE

10M/100M  
1000M

802.3at  
802.3af

30W  
PoE

10M/100M  
1000M



## PSE-1000GU

- Input: AC100V~240V



802.3at  
802.3af

30W  
PoE

10M/100M  
1000M



## PD-1000D

- PoE Splitter
- 5V / 9V / 12V / 18V adjustable Output Power
- Allow device to become standard PoE
- Input : RJ45 In (Data + Power)
- Output : DC Jack Out (Power)  
RJ45 Out (Data)



802.3at  
802.3af

30W  
PoE

10M/100M  
1000M

**APoE48V-1**

- Input: AC 100V~240V
- Output: 48V 0.4A
- Support 0.4A
- Power LED indicator

**APoE18V-1**

- Input: AC100V~240V
- Output: 18V 0.4A

10M  
100M

**AHPE305 Starter Kit**

- Qualcomm Chipset
- 200Mbps Homeplug Kit

**APoE01**

- Base Unit for Power over Ethernet
- PoE Injector
- Power LED Indicator



10M  
100M

**APoE48V**

- Input: AC 100V~240V
- Output: 48V 1A
- Heavy duty 48Watt
- LED Indicator



10M  
100M

**APoE03**

- Wall mount supported
- Power LED indicator
- Redundant PoE



10M  
100M

**APoE02**

- Wall mount supported
- Power LED indicator
- PoE Injector



10M  
100M

**AFA-1 Kits**

- Passive PoE
- Allows device to be PoE Ready



10M  
100M

**ApoE24V-75**

- Input: 100~240Ac  
50/60Hz
- Output: 24V 750mA

10M  
100M





# Cloud connect Wireless Internet Camera

## AIPC030i



- Peer-to-Peer Cloud Connect
- Full-featured, multi-camera iOS, Android smartphone app
- 10-meter IR LED, and physical IR-cut filter bringing vivid day & night images
- Built-in micro-SD slot, Max. 32GB video recording / event snapshot
- 2-way audio, alarm trigger, camera Pan / Tilt movement
- 81-CH camera management software
- Ideal for wireless backbone, signal bridge, access point scenarios



## AIPC200W



- Peer-to-Peer Cloud Connect
- H.264, MJPG dual codec, ONVIF compliant
- Full-HD 1080p, 15 frames per second
- 5-meter IR LED, and physical IR-cut filter bringing vivid day & night images
- Built-in micro-SD slot, Max. 32GB video recording / event snapshot
- 2-way audio, alarm trigger, camera Pan / Tilt movement scenarios



## AIPC033



- Peer-to-Peer Cloud Connect
- H.264, MJPG dual codec, ONVIF compliant
- 1280x720, 720p, 30FPS real-time display
- 5-meter IR LED, and physical IR-cut filter bringing vivid day & night images
- Built-in micro-SD slot, Max. 32GB video recording / event snapshot
- 2-way audio, alarm trigger, camera Pan / Tilt movement scenarios



## AIPC218



- Peer-to-Peer Cloud Connect
- H.264, MJPG dual codec, ONVIF compliant
- FullHD 1080p, 15FPS viewing & recording
- 5-meter IR LED, and physical IR-cut filter bringing vivid day & night images
- Built-in micro-SD slot, Max. 32GB video recording/event snapshot
- Built-in speaker, 2-way audio, motion trigger



## AIPC118



- Peer-to-Peer Cloud Connect
- H.264, MJPG dual codec, ONVIF compliant
- 1280x720, 720p, 30FPS real-time display
- 5-meter IR LED, and physical IR-cut filter bringing vivid day & night images
- Built-in micro-SD slot, Max. 32GB video recording/event snapshot
- Built-in speaker, 2-way audio, motion trigger



## Signal Booster kit for

## AIPC030i / AIPC033 / AIPC200W



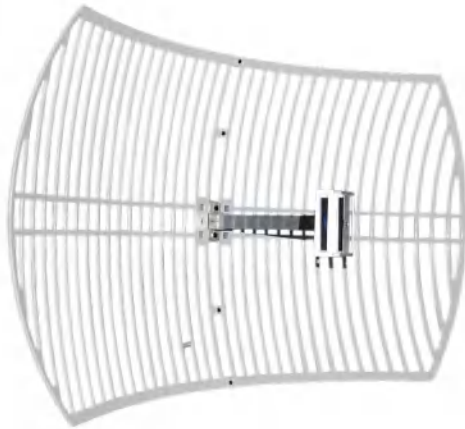
- Enhance signal transmission and reception for your wireless IP camera
- Optimized for AIPC030i, AIPC033, and AIPC200W in 2.4GHz wireless
- Built-in signal amplifier to get longer range, better signal reception for IP camera
- Field-proven wireless coverage and signal stability





# Indoor / Outdoor Antenna

## Grid



### 2.4GHz

AGA-2419	19dBi
AGA-2424	24dBi

### 5.8GHz

AGA-5824	24dBi
AGA-5828	28dBi

## Omni

- N Female



### 2.4GHz

AOA-2408	8dBi
AOA-2410	10dBi
AOA-2412	12dBi
AOA-2415	15dBi

### 5.8GHz

AOA-5808	8dBi
AOA-5810	10dBi
AOA-5812	12dBi
AOA-5815	15dBi

## Yagi



### 2.4GHz

AYA-2408	8dBi
AYA-2410	10dBi
AYA-5812	12dBi

AYA-5815	15dBi
AYA-5818	18dBi

## Mesh Omni Antenna

- N male



### 2.4GHz

AOA-2405M	5dBi
AOA-2408M	8dBi
AOA-2410	10dBi

### 5.8GHz

AOA-5808	8dBi
AOA-5810	10dBi

## Sector



### 2.4GHz

ASA-2412-120	12dBi
ASA-2415-120	15dBi
ASA-2418-120	18dBi

### 5.8GHz

ASA-5815-120	15dBi
ASA-5818-120	18dBi
ASA-5820-120	20dBi

## APA-M03

DualBand Indoor Antenna

- 2.4GHz 6dBi
- 5GHz 8dBi
- 1M Cable
- RP-SMA Connector



## APA-M04

- 2.4GHz 7dBi Indoor Panel Antenna
- RP-SMA Connector



## APA-M05

- 2.4GHz 7dBi Indoor Panel Antenna
- RP-SMA Connector



## ARS-AS01 Magnet base

- 1M Cable
- RP-SMA Connector



## ARS-N05

- 2.4GHz 5dBi PR-SMA Connector



## ARS-N19

- 2.4GHz 9dBi Dipole Antenna
- RP-SMA Connector



## ARS-N19CW

- 2.4GHz Dipole Antenna 9dBi N Male Connector
- RP-SMA Connector



**Panel**



**2.4GHz**

APA-L2408	8dBi
APA-L2412	12dBi
APA-L2414	14dBi
APA-L2419	19dBi

**5.8GHz**

APA-L5814	14dBi
APA-L5816	16dBi
APA-L5818	18dBi
APA-L5823	23dBi

**MIMO**

- Outdoor



**APA-L2414M**



**APA-L2414M** is the 2.4GHz 14dBi MIMO Panel Antenna with 2x N-female connectors. It suitable for all kind of outdoor 2.4GHz device. It is also the special design for N2C direct mount on APA-L2414M.

**Applications**

- Directional and multipoint applications
- Bluetooth
- Public Wireless Hotspot
- WiFi, RFID
- Wireless Video Systems



N2C can direct mount on APA-L2414M

**Specification**

Electrical		Mechanical	
Frequency:	2.4 ~ 2.5GHz	Dimension	230*230mm
V.S.W.R:	1.3:1	Mount Style	Pole mount
Antenna Type:	Patch Directional	Mounting	Stainless Steel
Gain:	14 dBi	Wind Survival	Greater then 150MPH
Polarization:	Vertical Horizontal		
Vertical Beam-with:	30 degree		
Horizontal Beam-with:	30 degree		
Connector:	2x N Female		

# Embedded AP / Router Board / Module

## Hornet-UB

- Atheros AR9331
- IEEE 802.11b/g/n
- USB x 1
- Input: DC5V/5V PoE



## Hornet-SHB

- Atheros AR9331
- IEEE 802.11b/g/n
- Input: 12V PoE



## AIP-W502U

- Ralink RT3050
- IEEE 802.11b/g/n
- DC12V/12V PoE
- Support USB



## AIP-W515H

- Realtek RTL8196c
- IEEE 802.11b/g/n
- Input: DC12V/12V PoE



## Ralink abgn 2T3R

- Ralink RT3662
- IEEE 802.11a/b/g/n
- Input: DC12V  
802.3af(option)



## N5 PCBA

- Atheros AR7240
- IEEE 802.11a/n
- 8MB Flash
- 32MB SDRAM
- MMCX x 2
- LAN Ports x 2
- Input: 24V PoE



## AP96

- Atheros AR7161
- 16MB Flash, 128MB SDRAM
- Mini PCI Slot x 3
- Mini PCI-e Slot x 1
- Micro SD card Slot
- SIM card Slot
- Input: 48V PoE/DC12V



## N2 PCBA

- Atheros AR7240
- IEEE 802.11b/g/n
- 8MB Flash
- 32MB SDRAM
- MMCX x 2
- LAN Port x 2
- Input: 24V PoE





**Embedded Module**

**MB92M / AB92MH**

- Atheros AR9220
- IEEE 802.11a/b/g/n
- MMCX x 2 / MMCX x 1



**AWPCI085PR**

- Atheros AR5414
- IEEE 802.11a/b/g



**PoE Module**

**PD-1000DM Module**

- 802.3at/af Gigabit Switchable
- Surge Protection PoE Module
- 5/9/12/18V adjustable output



**PD-1000CM Module**

- IEEE802.3at/af
- Gigabit
- 5/9/12/18V adjustable output



**PD-1002 Module**

- 802.3at/af
- Output12V



**PD-1001 Module**

- 802.3at/af
- Output12V



## AWAP020 Metal Enclosure

- IP67



## ODC Integrated Antenna

- 5.8GHz
- 2.4GHz
- Mimo
- IP67



## WISP Integrated Antenna

- 5.8GHz
- 2.4GHz
- Mimo
- IP65



## Lightning Protector



N male - N Female



N Female - N Female



Ground wire

## N-Female to IPEX

- RG178



## PR-SMA Female to IPEX

- 1.13 cable



## N-male to RP-SMA male

- CFD 200



## N-Female to MMCX

- RG316



## RP-SMA Female to MMCX

- RG178 / RG316



## N-male to N-male

- CFD 400



**AUSBC-5M**

- USB2.0 ExtensionCable 5M



**AUSBC-10M**

- USB2.0 ExtensionCable 10M



**AUSBC-15M**

- USB2.0 ExtensionCable 15M



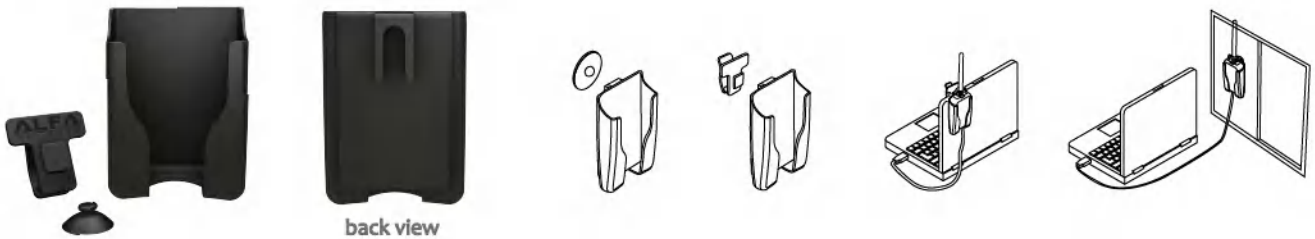
**AUSBC-20M**

- USB2.0 ExtensionCable 20M



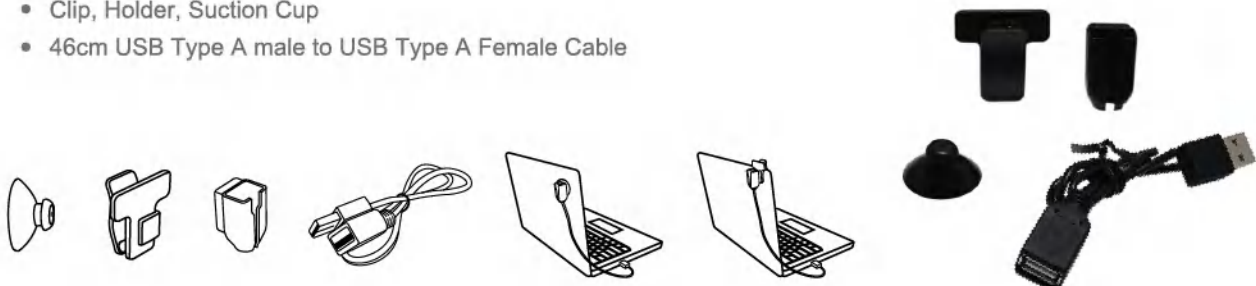
**U-Mount**

- Clip, Holder, Suction Cup



**USB Cable Set**

- Clip, Holder, Suction Cup
- 46cm USB Type A male to USB Type A Female Cable







## **ALFA Network Inc.**

Address: 4F-1, No.106, Rueiguang Rd.,  
Neihu District, Taipei City114, Taiwan

E-mail: [sales@alfa.com.tw](mailto:sales@alfa.com.tw) Website: [www.alfa.com.tw](http://www.alfa.com.tw)

TEL: 886-2-2796-8477 FAX: 886-2-2796-8478